

SPECIFICATIONS

LIGHT DISTRIBUTION III AND FT

HOUSING

Heavy wall extruded aluminum, internally sealed for weather proofing. Closed cell neoprene foam gasket is applied between lens frame and housing.

LENS

.125" clear polycarbonate, sealed into mill finish aluminum frame with silicone. Lens frame is hinged and secured with two stainless steel quarter turn fasteners.

REFLECTOR

Specular aluminum, available on type III, FT light distribution.

BALLAST ASSEMBLY

Ballast is high power factor mounted on aluminum tray. The assembly is removable as unit for easy maintenance.

FINISH

Polyester powder fuse coating is standard, other finishes available, contact factory.

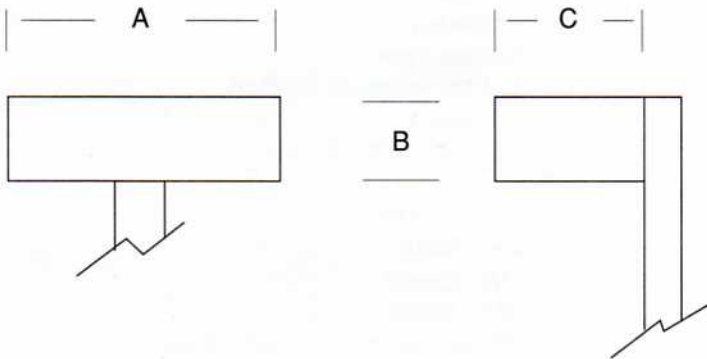


UL LISTED FOR WET LOCATION

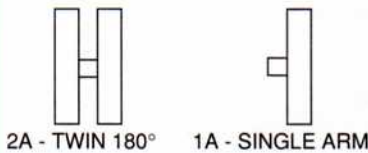
MOUNTING STYLES

DIMENSIONAL DATA

ORDERING INFORMATION



- 1 Series
- 2 Mounting Style
- 3 Wattage
- 4 Lamps Type
L - Low Pressure Sodium
- 5 Voltage
120/240, 208/277, 480
- 6 Light Distribution
III, FT
- 7 Finish
BZ - Bronze
BK - Black
GN - Green
WT - White
(for any other color consult factory)
- 8 Options
GL - Glass Lens
RCP - Receptacle and Photo Control
RC - Photo Cell Receptacle only
PC - Photo Cell Only
FS - Fuse



WATTAGE	A	B	C	EPA
33 THRU 55	20"	6"	14	.83
90	24"	6"	16	1.0
135	34"	6"	16	1.4
180	48"	6"	16	2.0

EXAMPLE SERIES MOUNTING WATTAGE LAMP TYPE VOLTAGE DISTRIBUTION FINISH OPTION

DS - 1A - 180 - L - 208 - FT - BZ - RCP